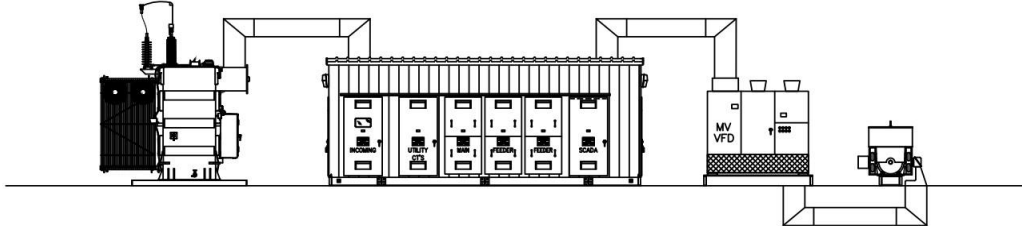


## Equipment Solutions | System Integration | Site Services



### Products

#### Medium Voltage AC Controllers

- Variable Frequency Motor Drives (VFD's)
- Soft-Start Motor Controls
- LCI Drive Conversion
- Dynamic VAR Compensation Controls

#### Medium Voltage Motors

- Induction & Synchronous & Wound Rotor
- Horizontal & Vertical
- Super High Speed
- API & Hazardous Duty
- Extreme Duty & Harsh Environment

#### Generators

- 2 Pole & 4 Pole High Voltage
- Synchronous
- Air or Water cooled

#### Medium Voltage Transformers

- Power, Substation, Padmount, Distribution, and Drive Isolation
- Dry Type, Oil Filled & Water Cooled
- New or Reconditioned

#### Low, Medium and High Voltage Distribution Equipment

- Medium Voltage Switchgear
- Unit Substations
- Control Buildings, E-Houses & PDC's
- LACT Skids, PLC Panels, Data Centers

### Integration & Services

- |                                  |                              |
|----------------------------------|------------------------------|
| • Industrial Construction        | • Engineering Management     |
| • Electrical & Mech. Contracting | • Fiber Optics               |
| • Excavation                     | • Structural & Fabrication   |
| • Automation and Integration     | • Fire Protection & Security |
| • Concrete                       | • HVACR                      |
| • Instrumentation                | • Mobility IoT               |
| • Crane Services                 | • Outage & Maint.. Support   |
| • Control Engineering            | • Tower Services             |
| • Communication                  | • Solar                      |





4535 Gibsonia Road  
Gibsonia, PA 15044  
Phone: 412.213.0928  
Fax: 412.213.0928  
info@kurkpower.com

[www.kurkpower.com](http://www.kurkpower.com)

## Partners

**TMEiC**  
We drive industry



### TMEiC

Medium Voltage AC Variable Frequency Drives and Motors. 2.4 to 13.8KV. 200 to 150,000HP. Energy Saving Stand Alone Drives. Rugged, High Power Applications. System Drives. Solar Drives. Remote Connectivity. High Performance, Ultra High Speed, Induction and Synchronous Motors. Energy Saving Motors, Horizontal and Vertical Motors. Hazardous Area, Explosion Proof and Flame Proof Motors. Slip Energy Recovery Systems.

### Beitzel Corporation / Pillar Innovations

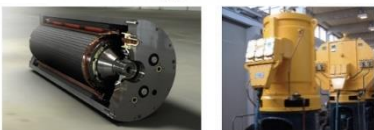
Professional Engineering Services, Project Management, Electrical Services and Contracting, Custom Machine Building, Industrial Automation & Integration, Panel Design and Fabrication, Mobility & IoT, Instrumentation, Fiber Optics, Communications, Tower Services, Off-Grid Solutions, Security & Access Control, Fire Protection, Utility Vehicles.

### Oregon Power

Padmount Transformers - 75kVA to 7500kVA, high voltages through 34.5kV (delta or wye), low voltages through 15kV (delta or wye). Substation Style - 225kVA through 10000kVA, high voltages through 34.5kV (delta or wye), low voltages through 15kV (delta or wye). Power Transformers - 5mVA to 100mVA, high voltages through 138kV (delta or wye), low voltages through 15kV (delta or wye). 65° C temperature rise – ONAN, aluminum or copper windings, large selection of stock units.

**ATB MORLEY**

Technology in Motion



### ATB Morley

Reliable motors and generators for the most demanding applications; Mining, Power Generation, Marine / Defense, Industrial, and Oil & Gas Industries. Motors, Generators, and Control Equipment. Mine Duty AC & DC Electric Motors for Cutters, Conveyors, Crushers, Pumps, Ventilation, Dust Suppression, Shuttles Cars, Locomotives, Air Cooled, Water Cooled, VFD Rated, Flame/Explosion Proof.

**Application Specific  
Value Engineered**



### Power Distribution Equipment

Low-Medium-High Voltage Distribution Equipment, Substation/Switchyard Packages, Medium Voltage Switchgear, Unit Substations. Control Buildings/E- Houses/PDC's, Pump Skids, Portable Power, LACT Skids, Control/Relay/PLC Panels, Data Centers.